

CONTROL
COMPANY



CONTROL
COMPANY



**Traceable[®] Light Meters, Multimeter,
Sound Meters, Tachometers, Moisture
Meter, and Oxygen Meter Guide**

----- ISO 17025 ACCREDITED (A2LA)

----- ISO 9001 QUALITY-CERTIFIED (DNV)

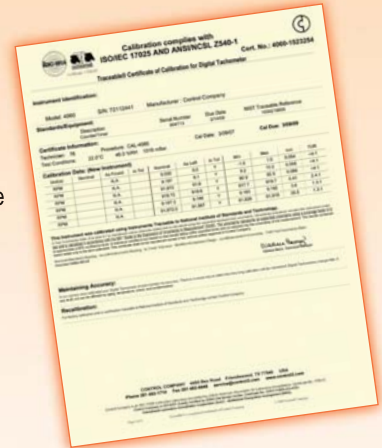
Traceable® Meters

All Traceable® products are provided with a Traceable® Calibration Certificate from our ISO 17025 calibration laboratory. Where indicated Traceable® Certificates are accredited by the American Association for Laboratory Accreditation (A2LA).

Traceable® Certificate indicates the product is traceable to standards provided by the National Institute of Standards and Technology (NIST), a U.S. Government agency within the Commerce Department. The Traceable® Certificate complies with ANSI/NCCL Z540-1.

A2LA is widely recognized internationally through bilateral and multilateral agreements and through its participation in the International Laboratory Accreditation (ILAC) and Multilateral Recognition Arrangement (MRA). Through Control Company's A2LA Accreditation, our Traceable® Certificates are internationally recognized by accreditation agencies and governments in over 75 countries.

A Traceable® Certificate includes all of the information to meet today's stringent accreditation demands, CLIA requirements, government specifications, and ISO 9000 certifications.



Control Company is an ISO 9001 Quality Certified Company

This quality certification provides users with the assurance that they receive only the finest and most reliable products. It is worldwide recognition of superb quality for innovative electronic products. ISO 9001 Certification insures that every product is checked and rechecked to provide for absolutely the highest quality. In addition, ISO 9001, in contrast to other ISO 9000 certifications, requires that the design phase of every product be included in the quality requirements. The 9001 certification provides that quality is designed into every product beginning with the first engineering drawing. Control Company is ISO 9001 certified by DNV (Det Norske Veritas).

INDEX

- Battery Tester** 9
- Data Logger** 5
- Light Meters** 2 - 5
- Moisture Meter** 6
- Multimeter** 9
- Oxygen Meter** 7
- Sound Meters** 8
- Tachometers** 10 - 11



Traceable® Pocket Digital Light Meter

Meter reads from 0 to 1,999 foot-candles (resolution 0.1 to 1). Bright ½-inch-high digits make it an easy to read pocket light meter.

The simplicity of the two-button operation eliminates the need to refer to directions. Functions are on/off, and range. The meter can be zeroed with the simple turn of an adjustment screw.

Traceable to NIST for accuracy

To assure accuracy an individually serial-numbered Traceable® Certificate is supplied to indicate traceability to standards provided by NIST (National Institute of Standards and Technology).

Unit is supplied flip-open stand and 9-volt battery. Sensor features a 40 inch long lead and measures 2¾ x 3¼ x ¾ inches. Unit size is 2¾ x 5¼ x 1 inches, weight is 6½ ounces.

Cat. No. 3248 Traceable® Pocket Digital Light Meter

Traceable® Pocket Digital Light Meter		
Range	Resolution	Accuracy
0 to 199.9 Fc	0.1 Fc	(±5% full scale + 4)
200 to 1,999 Fc	0.001 Fc	(±5% full scale + 4)

Traceable® Dual-Range Light Meter

Dual-Range Meter reads both lux and foot-candles on a large ½-inch-high display. An analog output of 0.1 millivolt per digit allows readings to be captured by a recorder. Precision selenium photovoltaic cells and microprocessor provide for a fast-response sampling rate of 0.4 seconds and an automatic zero adjustment. Display update rate may be set to 1 or 2 seconds.

To assure accuracy an individually serial-numbered Traceable® Certificate is supplied to indicate traceability to standards provided by NIST (National Institute of Standards and Technology).

Monitor and store results

DATA HOLD button freezes the display to capture readings. Precise photodiode and color-correction filter provide cosine- and color-corrected measurements.

Readings in lux and foot-candles

Dual-Range Meter measures lux in three ranges: 0 to 1999 (1 lux resolution), 2000 to 19,990 (10 lux resolution), and 20,000 to 50,000 (100 lux resolution). Readings in foot-candles: 0 to 199.9 (0.1 Fc resolution), 200 to 1999 (1 Fc resolution), 2000 to 5000 (10 Fc resolution). For accuracy see chart. Unit is supplied with 2 inch diameter photocell, 40-inch cable, Traceable® Certificate, 9-volt alkaline battery, and recorder output. Size is 6½ x 3 x 1½ inches. Weight is 10 ounces. Replacement battery Cat. No. 1112.

Cat. No. 3251 Traceable® Dual-Range Light Meter

Cat. No. 4138 Easy-Use Accessory Adaptor 115 VAC



Traceable® Dual-Range Light Meter

Range		Resolution	Accuracy
Lux	0 to 1999 lux	1 lux	±5% reading + 10 lux
	2000 to 19,999 lux	10 lux	±5% reading + 100 lux
	20,000 to 50,000 lux	100 lux	±5% reading + 100 lux
Foot-Candles	0 to 199.9 Fc	0.1 Fc	±5% reading + 1 Fc
	200 to 1999 Fc	1 Fc	±5% reading + 10 Fc
	2000 to 5000 Fc	10 Fc	±5% reading + 100 Fc

Traceable® Dual-Display Light Meter

Dual displays show lux or foot-candles, or percent differential from a reference point, and the selected light source (daylight, tungsten, fluorescent, or mercury). Traceable® light meter has Serial RS-232 output that allows it to be connected to a computer or data logger for monitoring and keeping results. To assure accuracy an individually serial-numbered Traceable® Certificate is supplied to indicate traceability to standards provided by NIST (National Institute of Standards and Technology).

Readings in lux and foot-candles

Dual-Display Meter measures lux in three ranges: 0 to 1999 (1 lux resolution), 2000 to 19,990 (10 lux resolution), and 20,000 to 50,000 (100 lux resolution). Readings in foot-candles: 0 to 199.9 (0.1 Fc resolution), 200 to 1,999 (1 Fc resolution), 2,000 to 5,000 (10 Fc resolution). For accuracy see chart. Unit has zero reference settings for all light sources.

Unit recalls highest, lowest, and average readings at the touch of a button. DATA HOLD button freezes the display to capture readings. Precise photodiode and color-correction filter provide cosine- and color-corrected measurements.

Jumbo-sized digits are 1 3/8 inches high. Unit is supplied with 2 inch diameter photocell (cable length is 40 inches), Traceable® Certificate, 9-volt alkaline battery, and serial computer output. Probe specification is 2-inch diameter photo cell/ 40-inch cable length. Size is 7 x 3 x 1 1/4 inches. Weight is 9 1/2 ounces. Replacement battery Cat. No. 1112.

- Cat. No. 3252** **Traceable® Dual-Display Light Meter**
- Cat. No. 4138** **Easy-Use Accessory Adaptor 115 VAC**
- Cat. No. 4136** **Data Acquisition System Accessory**
- Cat. No. 4325** **Data Logger Accessory**
(see full description on page 5)
- Cat. No. 4326** **Accessory 115 VAC Adaptor for Data Logger**



Computer Output

Traceable® Dual-Display Light Meter			
Range		Resolution	Accuracy
Lux	0 to 1999 lux	1 lux	±4.5% full scale
	2000 to 19,999 lux	10 lux	±4.5% full scale
	20,000 to 50,000 lux	100 lux	±4.5% full scale
Foot-Candles	0 to 199.9 Fc	0.1 Fc	±4.5% full scale
	200 to 1999 Fc	1 Fc	±4.5% full scale
	2000 to 5000 Fc	10 Fc	±4.5% full scale

Traceable® Ultraviolet Light Meter

Light meter has an UV wavelength range of 320 to 390 nm. Traceable® Ultraviolet Light Meter measures on three different ranges from 0 to 199.9 $\mu\text{W}/\text{cm}^2$ (resolution 0.1 $\mu\text{W}/\text{cm}^2$), 1.999 mW/cm^2 (resolution 0.001 mW/cm^2), and 19.99 mW/cm^2 (resolution 0.01 mW/cm^2). Accuracy is $\pm(2\%$ of full scale plus 2 digits).

Connect to computer or data logger

Traceable® Light Meter has serial RS-232 output that allows it to be connected to a computer or data logger for monitoring and keeping results. To assure accuracy an individually serial-numbered Traceable® Certificate is provided to indicate instrument traceability to NIST (National Institute of Standards and Technology).

Cosine- and color-correct measurements

Unit recalls highest, lowest, and average readings at the touch of a button. DATA HOLD button freezes the display to capture readings. Precise photodiode and color-correction filter provide cosine- and color-corrected measurements.

Unit is supplied with 3/4-inch diameter photocell (cable length is 40 inches), Traceable® Certificate, 9-volt alkaline battery, serial computer output, and carrying case. Size is 7 x 3 x 1 1/4 inches. Weight is 9 1/2 ounces. Replacement battery Cat. No. 1112.

- Cat. No. 3253 Traceable® Ultraviolet Light Meter
- Cat. No. 4138 Easy-Use Accessory Adaptor 115 VAC
- Cat. No. 4136 Data Acquisition System Accessory
- Cat. No. 4325 Data Logger Accessory
(see full description below)
- Cat. No. 4326 Accessory 115 VAC Adaptor for Data Logger



Computer Output

Traceable® Ultraviolet Light Meter		
Range	Resolution	Accuracy
0 to 199.9 $\mu\text{W}/\text{cm}^2$	0.1 $\mu\text{W}/\text{cm}^2$	$\pm 4 \mu\text{W}/\text{cm}^2 + 1 \mu\text{W}/\text{cm}^2$
200 to 1.999 mW/cm^2	0.001 mW/cm^2	$\pm 0.04 \text{mW}/\text{cm}^2 + 0.01 \text{mW}/\text{cm}^2$
2.00 to 19.99 mW/cm^2	0.01 mW/cm^2	$\pm 0.4 \text{mW}/\text{cm}^2 + 0.1 \text{mW}/\text{cm}^2$



Data Logger

Accessory Data Logger— Complete DAS-4™ System captures and stores up to 8000 bytes (over 1000 readings). Readings may be taken at intervals from 1 second to 99 hours. Stored readings may be downloaded to any PC and viewed. Can be read as-is or imported to spreadsheets, databases, and statistical programs. Supplied complete with 36-inch serial cable with D9F computer plug, 3 1/2 inches Windows® diskette, and four AA alkaline batteries. Size is 5 x 3 x 1 inches. Weight is 7 ounces. For use with Traceable® meters featuring RS-232 output. Replacement battery Cat. No. 1111.

- Cat. No. 4325 Data Logger

Traceable® Moisture Meter

Meter's memory contains nine material groups and calibrations

Traceable® Moisture Meter displays material, wood, wood product, and paper moisture content 9.0 to 30.0% with a resolution of 0.1%. Accuracy is $\pm 4.5\%$ of the reading $+0.5\%$. Memory contains nine material groups such as fiberboard, construction material, and calibrations for 150 types of wood. Applications include foods, grains, chemicals, pharmaceuticals, cosmetics, sludge, soil, and automotive liners for any specific product. User may establish reference moisture readings. Once programmed, the meter reports directly in percent moisture. Simply touch a material to measure moisture. Takes only seconds. Unit provides for automatic and manual temperature compensation.

Traceable to NIST for accuracy

To assure accuracy an individually serial-numbered Traceable® Certificate is supplied to indicate traceability to standards provided by NIST (National Institute of Standards and Technology). Serial RS-232 output allows it to be connected to a computer or data logger for monitoring and capturing results.

Memory recall and data hold

At the touch of a button the instrument recalls highest, lowest, and average readings. A DATA HOLD button freezes the display to capture readings. Store results on a computer or Data Logger.

Jumbo-size digits are $1\frac{3}{8}$ inches high. Unit is supplied with probe, ten spare pins, Traceable® Certificate, 9-volt alkaline battery, serial computer output, and carrying case. Size is 7 x 3 x $1\frac{1}{4}$ inches. Weight is $9\frac{1}{2}$ ounces. Replacement battery Cat. No. 1112.

Cat. No. 4310 Traceable® Moisture Meter

Cat. No. 4138 Easy-Use Adapter 115 VAC

Cat. No. 4136 Data Acquisition System Accessory

Cat. No. 4325 Accessory Data Logger
(see full description on page 5)



Computer Output

Traceable® Dissolved Oxygen Meter

Simultaneously displays oxygen concentration and temperature. Serial RS-232 output allows it to be connected to a computer or data logger for monitoring and keeping results. Jumbo-size digits are 1 3/8 inches high. At the touch of a button the instrument recalls highest, lowest, and average readings. A DATA HOLD button freezes the display to capture readings.

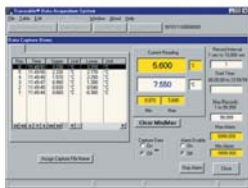
To assure accuracy an individually serial-numbered Traceable® Certificate is supplied to indicate traceability to standards provided by NIST (National Institute of Standards and Technology). Unit is supplied with probe, five membranes, electrolyte solution, 9-volt alkaline battery, serial computer output, and carrying case. Cable length is 40 inches. Size is 7 x 3 x 1 1/4 inches. Weight is 9 1/2 ounces. Replacement battery Cat. No. 1112.

Cat. No. 4320 Traceable® Dissolved Oxygen Meter

Cat. No. 4138 Easy-Use Adapter 115 VAC

Cat. No. 4136 Data Acquisition System Accessory

Cat. No. 4325 Accessory Data Logger
(see full description on page 5)



Computer Output

Traceable® Dissolved Oxygen Meter			
Description	Range	Resolution	Accuracy
Dissolved oxygen measurement	0.00 to 20.00 mg/l	0.1 mg/l	±0.4 mg/l
Dissolved oxygen measurement % air saturation	0.00 to 100% air saturation	0.1%	±0.7% mg/l
Temperature measurement	32.0 to 140°F/0.0 to 60°C	0.1°	±1.5°F/0.8°C
Automatic temperature compensation	mg/l mode: 0.0 to 60.0°C, % air mode: 0.0 to 60.0°C		
Salinity compensation	0 to 39%		
Altitude compensation	0 to 3900 m		



Traceable® Sound Level Meter

Three-decibel ranges

Features three-decibel ranges for greater precision: low (35.0 to 80.0 dB), medium (50.0 to 100.0 dB), and high (80.0 to 130.0 dB). Resolution is 0.1 dB and accuracy is ± 2 dB. Unit provides weightings for both A (frequencies for 500 to 10 kilohertz) and C (frequencies from 30 to 10 kilohertz) to meet IEC 651 Type-2 standards.

Adjustable response time

Response time may be set to fast (0.2 seconds) or slow (1.5 seconds). A handy memory data-hold function stores the highest reading achieved for later display. It fulfills OSHA requirements. Unit uses a 1/2-inch condenser microphone. A recorder jack permits capturing readings (AC and DC 10 mV/dB). Use the threaded tripod insert for long-term measurements.

Traceable to NIST

To assure accuracy an individually serial-numbered Traceable® Certificate is supplied to indicate traceability to standards provided by NIST (National Institute of Standards and Technology). Unit is supplied with 9-volt alkaline battery and carrying case. Size 10 x 3 x 1 inches and weight is 9 1/2 ounces. Replacement battery Cat. No. 1112.

Cat. No. 4335 **Traceable® Sound Level Meter**

Traceable® Analog Sound Meter

Easy-to-operate, Traceable® Analog Sound Meter provides fast readings on a color-coded scale. It quickly indicates over and under decibel readings. Measures from 54 to 126 decibels in seven ranges 60, 70, 80, 90, 100, 110, 120 dB. Switch permits weightings for either A (frequencies from 500 hertz to 10 kilohertz) or C (frequencies from 30 hertz to 10 kilohertz). Accuracy is ± 3 dB.

Features include: analog output for connecting to chart recorders, maximum button for locking on highest reading for peak sounds, and switch for selecting fast or slow response.

To assure accuracy an individually serial numbered Traceable® Certificate is supplied to indicate traceability to standards provided by NIST (National Institute of Standards and Technology). Unit is supplied with 9-volt alkaline battery, low battery checker, threaded insert for tripod, and Traceable® Certificate. Size is 2 1/2 x 7 x 1 1/2 inches and weight is 5 1/2 ounces. Replacement battery Cat. No. 1112.

Cat. No. 4336 **Traceable® Analog Sound Meter**



Traceable® Digital Auto-Range Multimeter

Designed specifically for checking the electrical functions of scientific equipment in laboratories. Perfect unit to test batteries, fuses, recorder outputs, cables, wall plugs, probes, printed circuit boards, and complex electronic instrumentation. Save money and time by solving problems and eliminating costly repairs. Unit ranges are from 1 millivolt to 400 volts AC/DC and 0.1 to 2,000,000 ohms. Accuracy is 2 units, or 2% of the reading. The multimeter instantly displays the correct answer by automatically selecting the proper range. Four-digit, $\frac{3}{8}$ -inch-high LCD display shows the exact resistance or voltage unit and indicates negative polarity with a minus sign.

To assure accuracy an individually serial-numbered Traceable® Certificate is supplied to indicate traceability to standards provided by NIST (National Institute of Standards and Technology).

Features an audible beep for checking continuity, ensuring instant detection of shorts/opens in probes, cables, or circuit boards. Sampling rate is twice a second. Intuitive operation makes directions almost unnecessary.

Comes complete with case, batteries, pair of needle probes, pair of alligator probes, and instructions. Size is $2\frac{1}{8} \times 4\frac{1}{4} \times \frac{1}{2}$ inches. Weight is 3 ounces. Replacement battery Cat. No. 1039.

Cat. No. 3250 Traceable® Digital Auto-Range Multimeter



Traceable® Battery Tester

Traceable® Battery Tester checks alkaline, carbon, silver-oxide, mercury, nickel-cadmium, and other batteries. Tests battery voltages from 1.35 to 12 volts on 13 ranges. Accuracy is $\pm 5\%$.

Traceable to NIST for accuracy

Simple color-coded scale immediately indicates battery condition. Individually serial-numbered Traceable® Certificate is provided to indicate traceability to standards provided by NIST (National Institute of Standards and Technology).

Actually tests the battery

Provides true resistive load readings equal to real-world usage. Tests batteries under actual operating conditions. Twenty-six precision resistors provide true representative loads for all batteries. Superior to voltmeters that provide only false, no-load values.

Requires no internal battery

Pays for itself by eliminating battery replacements. Self-powered; requires no internal battery. Checks any battery in one second.

Accurate and long-lasting

Gold-plated printed circuit board and silver-plated switches ensure both accuracy and a long life. Small ($3\frac{1}{2} \times 2\frac{1}{2} \times 1$ -inch) and lightweight (3-oz) unit comes with two test leads (27 $\frac{1}{2}$ -inch-long cables), Traceable® Certificate, and instructions.

Cat. No. 3410 Traceable® Battery Tester



Traceable® Tachometer with Red LED Pointer

Touchless handheld point-and-shoot tachometer targets a rotating object and provides instant precision results

Optical no-contact measurements are made by placing a piece of reflective tape on the rotating object. Red LED light locks on the self-adhesive reflective tape (30" supplied) and counts rotations. In two seconds it provides rock solid answers from 10 to 99,999 revolutions per minute (RPM). Five-digit resolution is 0.001, 0.01, 0.1, or 1 depending on the revolutions displayed.

Unit is designed to measure centrifuges, pumps, rollers, shafts, gears, motors, and moving surfaces. For accuracy see chart. HOLD button freezes results. Precision quartz crystal insures stable and repeatable results. LCD digits are ½-inch-high and may be read from 10 feet. Low battery condition is indicated on the display. Impact resistant ABS housing protects the unit.

To assure accuracy an individually serial-numbered Traceable® Certificate is provided from our ISO 17025 calibration laboratory. It indicates traceability to standards provided by NIST (National Institute of Standards and Technology). Supplied with a 9-volt battery (for thousands of readings for over a year). Size is 4¾ x 1¾ x 1¼ inches and weight is 4 ounces. Replacement battery Cat. No. 1112.

Cat. No. 4262

Traceable® Tachometer with Red LED Pointer

Traceable® Tachometer with Red LED Pointer		
Range	Resolution	Accuracy
0 to 9.999 RPM	0.001 RPM	±0.04% of reading + 0.02 RPM
10 to 99.99 RPM	0.001 RPM	±0.04% of reading + 0.02 RPM
100.00 to 999.99 RPM	0.01 RPM	±0.04% of reading + 0.2 RPM
1000.00 to 9999.99 RPM	0.1 RPM	±0.04% of reading + 2 RPM
10000 to 99999 RPM	1 RPM	±0.04% of reading + 22 RPM

Traceable® Touchless/Contact Digital Tachometer

Labs use this high accuracy unit to check speeds of centrifuges, motors, or stirrers. Five digit LCD is a vivid ½-inch high display. Tachometer takes only three seconds for most readings. A unique memory feature permits recalling the highest, lowest, and last reading. Unit is extremely easy to use; operation may be learned in one minute. One end of the unit provides contact readings with a rotating spindle.

The other end makes touchless readings using a beam of light. The light may be held as far away as twelve inches. The light beam reflects off self-adhesive tabs to provide readings of 0.1 to 99,999 revolutions per minute (RPM).

The contact end of the instrument measures speeds of 0.1 to 19,999 revolutions per minute, 0.05 to 1999.9 meters per minute, and 0.2 to 6560 feet per minute. Resolution in all modes is 0.1 below 1000 and 1 above 1000. For accuracy see chart.

Utilizes a precision quartz crystal for an accurate time base. To assure accuracy an individually serial-numbered Traceable® Certificate is provided from our ISO 17025 calibration laboratory accredited by A2LA. It indicates traceability to standards provided by NIST (National Institute of Standards and Technology).

Comes with four AA alkaline batteries (for thousands of intermittent readings for over a year), Traceable® Certificate, rugged ABS plastic case, self-adhesive reflecting tabs, internal light, cone for RPM, wheel for RPM, wheel for surface speeds, and carrying case. Size is 2½ x 8½ x 1½ and weight is 10½ ounces. Replacement battery Cat. No. 1111.

Cat. No 4059

Traceable® Touchless/Contact Tachometer



Traceable® Touchless/Contact Digital Tachometer		
Range	Resolution	Accuracy
0 to 999.9 RPM	0.1 RPM	±0.05% of reading + 0.1 RPM
1000.00 to 99999 RPM	1 RPM	±0.05% of reading + 1 RPM

Traceable® Touchless Digital Tachometer

Touchless, no contact operation is safe and easy. Tachometer measures revolutions per minute anywhere from two to seventy-eight inches away from any rotating object. Labs and plants use this high accuracy unit to read speeds of centrifuges, motors, and stirrers.

Five digit LCD is a highly visible 3/8-inch-high display. Unit shines a beam of light which reflects off self-adhesive tabs to give readings of 10 to 99,999 revolutions per minute. Resolution is 0.1 below 1000 and 1 above. Accuracy is ± 1 RPM or 0.05%.

Utilizes a precision quartz crystal for an accurate time base. To assure accuracy an individually serial-numbered Traceable® Certificate is provided from our ISO 17025 calibration laboratory accredited by A2LA. It indicates traceability to standards provided by NIST (National Institute of Standards and Technology). Takes only a second for most readings. A memory feature permits recalling the last reading at any time.

Supplied with Traceable® Certificate, four AA alkaline batteries, rugged ABS plastic case, self-adhesive reflecting tabs, internal light, and carrying case. Size is 3 x 8 1/4 x 1 1/2 inches and weight is 9 3/4 ounces. Replacement battery Cat. No. 1112.

Cat. No. 4060 Traceable® Touchless Digital Tachometer



Traceable® Contact Tachometer

Any rotating surface may be touched by the cone convex tip, funnel concave tip, or speed wheel for instant results

Tachometer displays revolutions per minute (RPM) from 10.000 to 99,999 (resolution 0.001, 0.01, 0.1, 1). In addition, it reports results in feet per minute 3.0000 to 30,000, yards per minute 1.000 to 10,000, and meters per minute 1.000 to 9999.9 (resolution for all three is 0.0001, 0.001, 0.01, 0.1 depending on the revolutions displayed).

Unit is designed to measure centrifuges, pumps, rollers, shafts, gears, motors, and moving surfaces. For accuracy, see chart. HOLD button freezes reading. Precision quartz crystal insures stable and repeatable results. Short sampling time provides answers in two seconds. LCD digits are 1/2-inch-high and may be read from 10 feet. Low battery condition is indicated on the display. Impact resistant ABS plastic housing protects the unit.

To assure accuracy an individually serial-numbered Traceable® Certificate is supplied to indicate traceability to standards provided by NIST (National Institute of Standards and Technology). Supplied with a 9-volt battery (for thousands of readings for over a year). Size is 4 3/4 x 1 1/4 x 1 1/4 inches and weight is 4 ounces. Replacement battery Cat. No. 1112.

Cat. No. 4261 Traceable® Contact Tachometer

Traceable® Contact Tachometer		
Range	Resolution	Accuracy
0 to 99.999 RPM	0.001 RPM	$\pm 0.04\%$ of reading + 0.01 RPM
100.00 to 999.99 RPM	0.01 RPM	$\pm 0.04\%$ of reading + 0.1 RPM
1000.0 to 9999.9 RPM	0.1 RPM	$\pm 0.04\%$ of reading + 1 RPM
10000 to 99999 RPM	1 RPM	$\pm 0.04\%$ of reading + 10 RPM

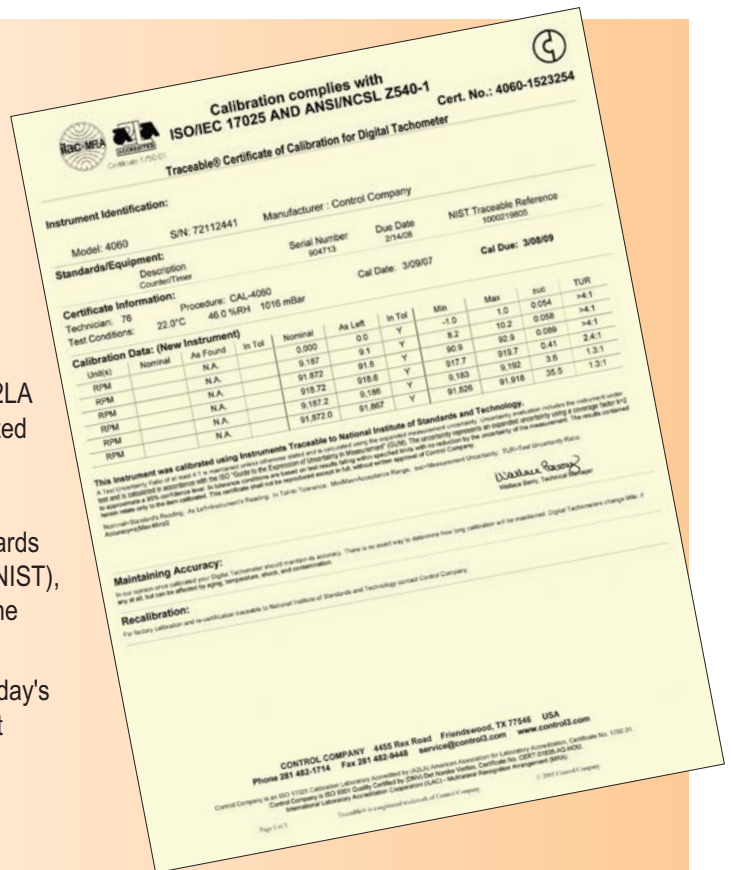
Traceable® Meters

All Traceable® products are provided with a Traceable® Calibration Certificate from our ISO 17025 calibration laboratory. Where indicated Traceable® Certificates are accredited by the American Association for Laboratory Accreditation (A2LA).

A2LA is widely recognized internationally through bilateral and multilateral agreements and through its participation in the International Laboratory Accreditation (ILAC) and Multilateral Recognition Arrangement (MRA). Through Control Company's A2LA Accreditation, Traceable® Certificates are internationally recognized by accreditation agencies and governments in over 75 countries throughout the world.

Traceable® Certificate indicates the product is traceable to standards provided by the National Institute of Standards and Technology (NIST), a U.S. Government agency within the Commerce Department. The Traceable® Certificate complies with ANSI/NC SL Z540-1.

A Traceable® Certificate includes all of the information to meet today's stringent accreditation demands, CLIA requirements, government specifications, and ISO 9000 certifications.



ISO 9001 Quality-Certified

Control Company is an ISO 9001 Quality-Certified company. This assures that you are supplied with only the finest and most reliable products. Control Company is recognized worldwide for superb quality and innovative products. We are one of the world's market leaders for digital equipment. Control Company is pleased to offer you the extra confidence that ISO 9001 Certification brings to every Control product. (DNV Certificate No. CERT-01805-2000-AQ-HOU-RAB).

ISO 17025 Calibration Laboratory Accredited

Control Company is an ISO 17025 calibration laboratory accredited by The American Association for Laboratory Accreditation (A2LA) meeting the requirements of ISO/IEC 17025 and ANSI/NC SL Z540-1. This ensures that you are supplied accurate instruments, individually tested to be traceable to NIST, and a Traceable® Certificate (A2LA Certificate No. 1750.01).



Control Company • 4455 Rex Road • Friendswood, Texas 77546 • USA

Control Company • Drawer 58307 • Houston, Texas 77258 • USA

E-mail sales@control3.com • www.control3.com

Telephone 281 482-1714 • Fax 281 482-9448